



Welcome TO

Sheraton Munich
Arabellapark Hotel.
Discover Munich's
most beautiful sights
and make the most of
top connections.

ROOMS & SUITES

The hotel offers 446 rooms and suites fitted with the comfortable Sheraton Sweet Sleeper Beds that are made for relaxation.

SUPERIOR ROOMS

Rooms in a modern design with twin and king-size beds, desk and high-speed internet access, ironing station and coffee/tea maker.

EXECUTIVE ROOMS

Same facilities as our superior rooms, with king and queen-size beds and our rainforest shower.

CLUB LEVEL

Same facilities as our superior rooms and access to the exclusive Sheraton Club Lounge.

SUITES

We offer Junior, Superior, Executive and Deluxe suites with a separate sleeping and living room. Some suites offer a kitchenette and several rooms.

HOTEL INFORMATION

SERVICE AND FACILITIES

The spacious 700m² wellness on the 22nd floor with a spectacular panoramic view over Munich features a pool, sauna, massage treatments, a gym and much more.

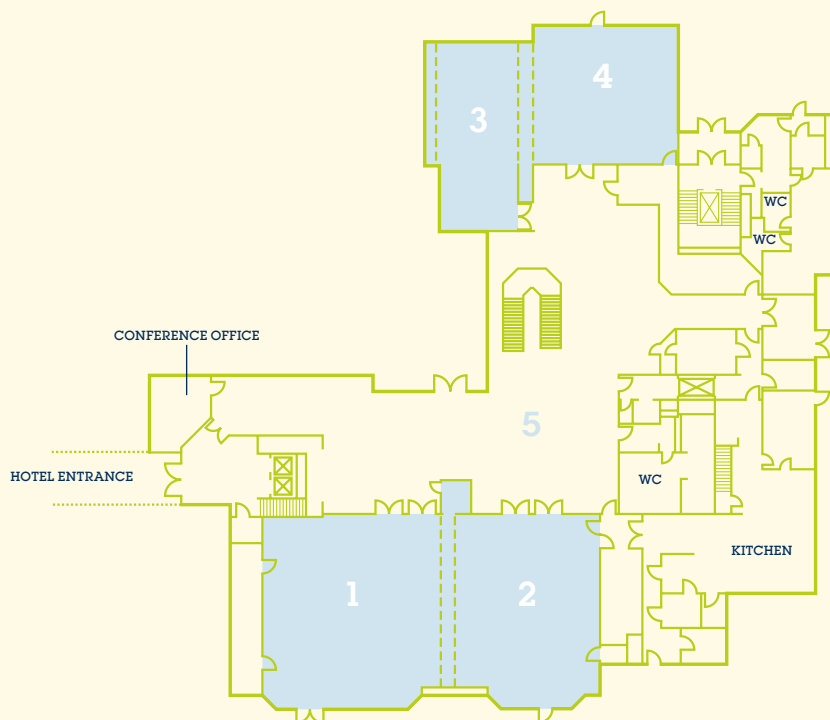
PLANNING FOR SUCCESS

Our conference center offers 18 conference room options for up to 500 participants, two large foyers for receptions and breaks with 300m² of exhibition space. All rooms are equipped with modern conference technology (HSIA) and offer natural daylight as well as air-conditioning. Furthermore, in collaboration with the Westin Grand Munich located opposite, we form a large conference center with 33 conference and 1,073 guest rooms.



GROUND FLOOR

- ROOM 1+2: CUVILLIES
- ROOM 1: CUVILLIES I
- ROOM 2: CUVILLIES II
- ROOM 3+4: ASAM
- ROOM 3: ASAM I
- ROOM 4: ASAM II
- ROOM 5: FOYER I



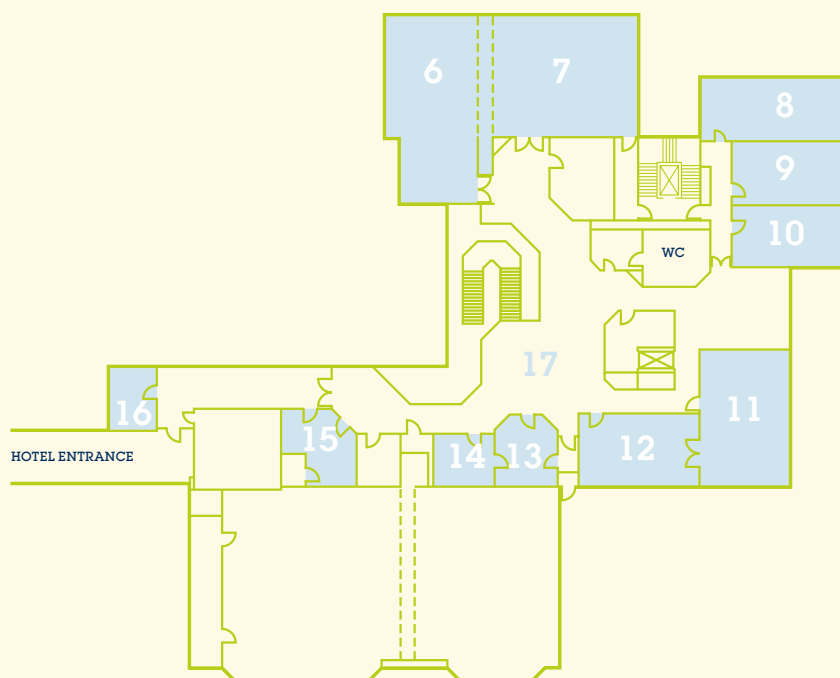
ROOM DIMENSIONS AND SEATING CAPACITY

Room	Classroom	Block	U-shape	Theatre	Banquet	Area in sqf	Length in ft	Width in ft	Height in ft
CUVILLIES	270	-	-	480	360	4478	98,43	45,00	19,70
CUVILLIES I	120	-	45	220	160	2239	46,59	45,00	19,70
CUVILLIES II	96	-	45	200	120	1959	37,73	32,00	19,70
ASAM	114	-	60	220	180	2260	62,50	19,00	10,50
ASAM I	51	36	30	90	60	969	49,38	32,00	10,50
ASAM II	60	36	36	130	90	1238	38,45	-	10,50
FOYER I	-	-	-	-	-	2152	-	-	-



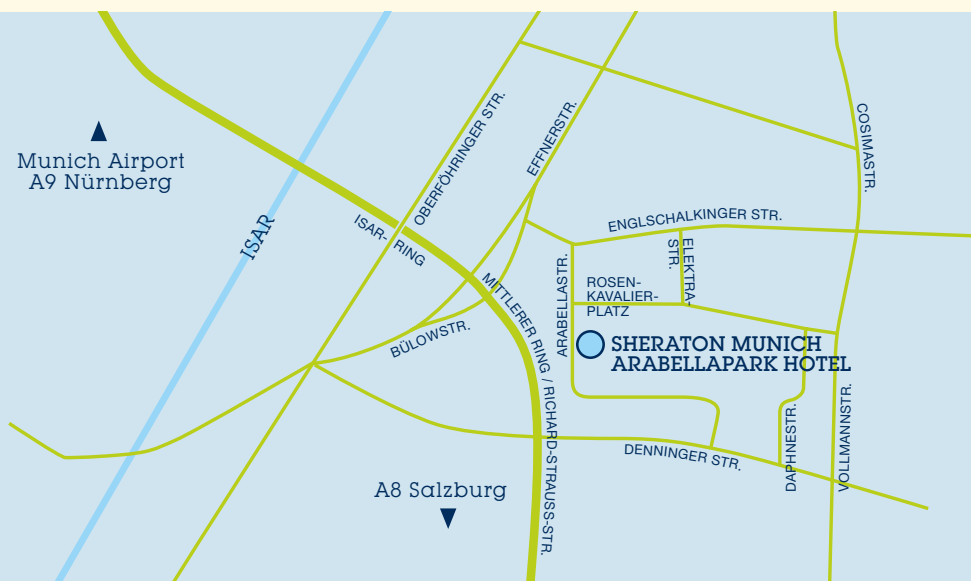
FIRST FLOOR

ROOM 6+7:	EFFNER
ROOM 6:	EFFNER I
ROOM 7:	EFFNER II
ROOM 8:	FISCHER
ROOM 9:	GÄRTNER
ROOM 10:	BÜRCKLEIN
ROOM 11:	HOLL
ROOM 12:	KLENZE
ROOM 13:	SEIDL
ROOM 14:	VISCARDI
ROOM 15:	ZIMMERMANN
ROOM 16:	ZUCCALLI
ROOM 17:	FOYER II



ROOM DIMENSIONS AND SEATING CAPACITY

Room	Classroom	Block	U-shape	Theatre	Banquet	Area in sqf	Length in ft	Width in ft	Height in ft
EFFNER	114		60	220	180	2346	67,26	31,99	9,84
EFFNER I	45	36	30	90	60	969	49,38	19,85	9,84
EFFNER II	60	36	36	130	90	1249	38,45	31,99	9,84
HOLL	40	36	24	55	40	786	34,94	22,47	9,84
FISCHER	30	28	26	50	30	614	37,89	16,24	9,84/11,1 6
GÄRTNER	24	22	20	40	20	498	30,35	16,57	9,84/11,16
BÜRCKLEIN	24	22	20	40	20	474	30,35	15,91	9,84/11,16
KLENZE	27	26	20	50	30	495	32,09	18,96	9,84
SEIDL	-	-	-	-	10	301	18,57	16,77	9,84
ZIMMERMANN	-	8	-	-	-	258	19,52	13,48	9,84
ZUCCALLI	-	-	-	-	6	194	15,26	12,96	9,84
VISCARDI	-	-	-	-	6	194	15,26	12,96	9,84
FOYER II	-	-	-	-	-	1076	-	-	-



**SHERATON MUNICH
ARABELLAPARK HOTEL**
Arabellastrasse 5
81925 Munich, Germany
t — +49 (0)89 9232 0
f — +49 (0)89 9232 4449
sheraton.com/arbellapark

INFORMATION AND BOOKING

t — +49 (0)89 9264 8200
f — +49 (0)89 9264 8209
events.arbellapark@arbellastarwood.com

RESTAURANTS & BAR

66 GRILL AND DINE

True to its name, at the restaurant 66 Grill and Dine, grilling takes pride of place! The kitchen focuses upon market-fresh grill variations, enhanced by the inimitable tang of roasted food. The timeless modern ambience beguiles guests with an ensemble of fine materials in a classic mix of brown and cream tones.

AUDREY'S FOOD & FLAVOUR

A symphony in white awaits guests at the new bistro restaurant, Audrey's food & flavour. On three different levels, comfy armchairs and couches extend an irresistible invitation to kick back and enjoy. On the menu, the emphasis is on fresh, light vitality foods with a Mediterranean touch, refined with delicate aromas and choice herbs and spices.

ARABELLA BAR

The chic arabella bar offers coffee enjoyment, complemented by a daily selection of cakes as well as classic and novel cocktail variations. Traditional and international bar snacks cater to the tastes of our cosmopolitan guests.

PAULANER BIERGARTEN

Munich's beer gardens are open from spring right through to fall, just as long as the weather is willing. The new Paulaner Beer Garden, featuring the Paulaner fountain, serves traditional Bavarian dishes as well as barbecued specialties.

During the summer months, the dark wooden flooring can accommodate up to 120 guests. This cozy, Bavarian-style area is fully wheelchair accessible.

OUR LOYALTY PROGRAM

We love your loyalty. And we want to thank you for choosing us. The Starwood Preferred Planner® program does just that. You and your attendees can earn Starpoints® when you stay or have a meeting with us. Then redeem them for free hotel stays or room upgrades here or at Sheraton®, Westin®, W®, Le Méridien®, St. Regis®, and Luxury Collection® hotels and resorts. It's our way of saying thanks.

More informations you can find here:
starwoodmeetings.com

DIRECTION

BY SUBWAY (U-BAHN)

5 minutes walk from the U4 Arabellapark station (last stop).

BY CAR

Easy access via the "Mittlerer Ring". When approaching from either direction, turn off at the "Bogenhausen" exit. Turn into Englschalkinger Strasse at Effnerplatz and continue towards Arabellastrasse. We will be happy to send you more detailed directions upon request. The public parking garage directly at the hotel offers 450 underground parking spaces. An additional 30 parking spaces are available in front of the hotel.